

VOTER MANAGEMENT DEVICES (VMD)

What is a VMD?

When you visit our voting stations to register to vote or vote:



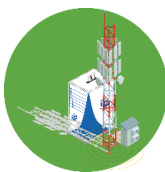
- A VMD is the new voter management device to replace the Zip-Zip barcode scanners.
- The VMD is a game-changer for voter registration, allowing the Electoral Commission to capture Voter information electronically and to locate voters in the correct voting district.
- It also a live tracking tool for voter participation on Election Day.
- It will serve as an administrative and management tool within the voting station.
- It has special applications to report on incidents at the station on registration and voting days, and to track and pay election officials.

What does it do?



- A VMD is a tablet with internet access customized for election management only. It features the following election management applications:
 - The IEC's voter registration portal;
 - Live tracking voter participation;
 - Voting station staff management systems; and
 - Voting logistics management.

Who will use it?



- **Registration:**
 - The device enables election officials to capture an eligible voter's information and to register them, and to check and update information of already registered voters;
 - Ensures accurate capturing of the voters address details; and
 - Ensures accurate placement of voters in the correct segment of the voters roll.
- **Voting:**
 - The device enables election officials to check voters' registration information and allow them entry to the voting station if they are registered in the voting district, or re-direct them to the correct one;
 - The device records voter participation live and ensures that no voter can cast their vote twice; and It keeps a record of those who have voted and share nationally with other devices.

Contact the Electoral Commission

www.elections.org.za | info@elections.org.za | 0800 11 8000 (during elections)

WhatsApp 'Hi' to 060 088 0000 to find election information on an interactive menu.

  @IECSouthAfrica



SOUTH AFRICA